

MARS™ CLIMAPLUS™



Mars Panels with ClimaPlus Performance/DONN DX/DXL Suspension System

FEATURES AND BENEFITS

- Excellent noise reduction (NRC .70)
- High light-reflective finish (LR-.89) reduces light fixtures and energy use
- Washable and scrubbable finish - impact and scratch resistant
- Meet USDA/FSIS guidelines for use in food processing areas
- Available in Optimized Recycled Content formulations to help maximize LEED recycled content contribution
- Coordinates visually with Halcyon for open/closed plan applications
- Non-directional, monolithic visual reduces installation time and waste
- ClimaPlus™ 30-year lifetime system warranty against visible sag.

APPLICATIONS

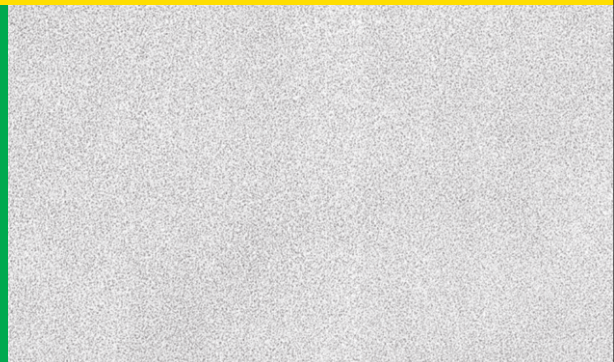
- Offices
- Conference rooms
- Healthcare
- Classrooms
- Corridors
- Reception/Lobby areas
- Dining rooms, kitchens and food prep areas

SUBSTRATE

- X-Technology mineral fiber

 High Recycled Content

Medium-textured panel



MARS CLIMAPLUS PANELS

Edge	Panel Size ³	Class	Item No.	NRC	CAC Min.	LR ²	Color	Grid Options	VOC Emissions	Anti-Mold & Mildew	Recycled Content ¹				
											Total	PC	PI	LEED RC	
SQ	2' x 2' x 3/4" 600x600x19mm	Class A	86185	.70	35	.89	White	A, B, C	Low		75.1%	0.0%	75.1%	37.6%	
	2' x 2' x 3/4" 600x600x19mm	Class A	86185HRC	.70	35	.89	White	A, B, C	Low		80.5%	17.7%	63.8%	49.1%	
	2' x 4' x 3/4" 600x1200x19mm	Class A	88185	.70	35	.89	White	A, B	Low		75.1%	0.0%	75.1%	37.6%	
	2' x 4' x 3/4" 600x1200x19mm	Class A	88185HRC	.70	35	.89	White	A, B	Low		80.5%	17.7%	63.8%	49.1%	
SLT	2' x 2' x 3/4" 600x600x19mm	Class A	86785	.70	35	.89	White	D	Low		75.1%	0.0%	75.1%	37.6%	
	2' x 2' x 3/4" 600x600x19mm	Class A	86785HRC	.70	35	.89	White	D	Low		80.5%	17.7%	63.8%	49.1%	
	2' x 4' x 3/4" 600x1200x19mm	Class A	88785	.70	35	.89	White	D	Low		75.1%	0.0%	75.1%	37.6%	
	2' x 4' x 3/4" 600x1200x19mm	Class A	88785HRC	.70	35	.89	White	D	Low		80.5%	17.7%	63.8%	49.1%	
FLB	2' x 2' x 3/4" 600x600x19mm	Class A	86985	.70	35	.89	White	E, F, G, H	Low		75.1%	0.0%	75.1%	37.6%	
	2' x 2' x 3/4" 600x600x19mm	Class A	86985HRC	.70	35	.89	White	E, F, G, H	Low		80.5%	17.7%	63.8%	49.1%	
	2' x 4' x 3/4" 600x1200x19mm	Class A	88985	.70	35	.89	White	E, F, G, H	Low		75.1%	0.0%	75.1%	37.6%	
	2' x 4' x 3/4" 600x1200x19mm	Class A	88985HRC	.70	35	.89	White	E, F, G, H	Low		80.5%	17.7%	63.8%	49.1%	
	30" x 30" x 3/4" 762x762x19mm	Class A	86830	.70	35	.89	White	E, F, G, H	Low		75.1%	0.0%	75.1%	37.6%	

LEGEND

Low Emission (VOC Class)
 Low-Emitting performance meets CA Specification 01350 (CA Dept. of Health Services Standard Practice for the testing of VOC emissions) and is listed on CHPS data base for low-emitting materials. USG Certificate of Compliance for Low VOC Emissions also available in usg.com

CLIMAPLUS Superior Performance⁴
 Contains a broad-spectrum antimicrobial additive on the face and back of the panel that provides resistance against the growth of mold and mildew.

High Recycled Content
 Classified as containing greater than 50% total recycled content. Total recycled content is based on product composition of post-consumer and pre-consumer (post-industrial) recycled content per FTC guidelines.

NRC ≥ .70
LR ≥ .85

GRID PROFILE OPTIONS

A DX [®] /DXL™ DXI DXII DXIII	B DXW™	C ⁵ Centricitee™ DXT™	D DX [®] /DXL™ DXI DXII DXIII	E Centricitee™ DXT™	F Fineline [®] 1/8" DXF™	G Fineline [®] 1/8" DXFF™	H Omega™ DXM™

PHYSICAL DATA/
FOOTNOTES

ASTM E1264 Classification
 Type IV, Form 1 and 2, Pattern E, G

ASTM E84 surface burning characteristics
 Class A
 Flame spread: 25
 Smoke developed: 50

Imperial Weight
 0.96-1.05 lb./ft.²

Metric Weight
 4.68 - 5.12 kg/m²

Thermal Resistance
 R-2.2

Backloading
 Refer to Installation and Maintenance

Maintenance
 Can be cleaned easily with a soft brush or vacuum.

Scrubability
 Exceed 1000+ scrub cycles without surface break or the extent of abrasion (ASTM D2486)

Washability
 Exceed 1000+ wash cycles without surface break or the extent of abrasion (ASTM D4828).

Water resistance
 Absorption of 1,660 gm/m² per Cobb test (T441 om-84).

Cleaning recommendations
 To clean panel, use a clean, white cloth with water or a mild detergent and wipe surface. To disinfect panel, lightly spray surface and wipe clean with a clean, white cloth. Acceptable colorless disinfectants include:
 - Hydrogen peroxide
 - Isopropyl alcohol
 - Quaternary ammonium
 - Sodium hypochlorite

Footnotes
 1. For details, see LEED report tool at usgdesignstudio.com.
 2. LR values are shown as averages.
 3. Not all panel sizes available in all geographic areas, some metric sizes available to order.
 4. Panel face and back surfaces treated with a proprietary, broad-spectrum antimicrobial additive that inhibits and retards the growth of mold and mildew. For details, see Ceiling Systems Limited Warranty Commercial Applications (CW2015).
 5. Maximum 2'x2' with SQ edge panels.

Short Specification:

- Ceiling system shall comprise USG Mars™ ClimaPlus™ high humidity / fire resistant acoustical ceiling panels in (DONN Centricitee 15mm [9/16"] / DONN DX 24mm [15/16"] / DONN Omega 15mm [9/16"] / DONN Fineline 15mm [9/16"] / DONN Identitee 15mm [9/16"]) exposed grid including wall trim as manufactured by USG Interiors, LLC.
- Panels shall have NRC 0.70.
- Panels shall have CAC 35.
- Nominal size (600mm x 600mm / 600mm x 1200mm) x 19mm / (2' x 2' / 2' x 4') x 3/4".
- Edge detail shall be (Fineline Bevel [FLB] / Shadowline Tapered [SLT] / Square edge [SQ]).
- Limiting Conditions - Maximum 49°C (120°F)/99% RH.